

JBC



FL-A

FLUX BRUSH

Reference Guide

www.jbctools.com

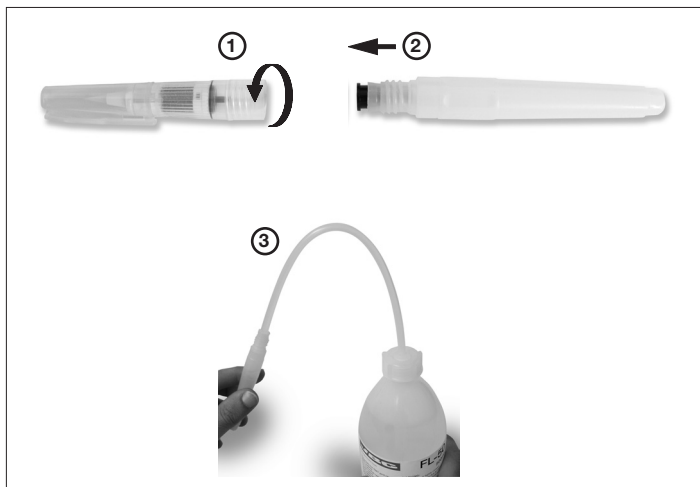
CONTENTS

FL-A



FL-A is a flux brush designed to be used in the preparation of printed circuits prior to soldering an SMD component, especially flat pack integrated circuits. All you need to do is fill the barrel with the flux.

Our pens have a retractable valve in them so you have complete control of how much flux you release by gently squeezing the barrel.

HOWTO USE

- 1- Unscrew the brush cap from the barrel.
- 2- Remove the filter cap that seals the flux in the barrel.
- 3- Completely fill with flux and reseal with the filter cap.

Use JBC Flux and follow the safety instructions

TECHNICAL SPECIFICATIONS

Capacity: 5,5 ml.



This product should not be
thrown in the garbage.



MORE INFORMATION
www.jbctools.com

0011278/1211